

Corners to be Indexed

E 1/4 22-106-40

SE 22-106-40

JAN 24 2022

Karen Brown

I hereby certify that this document and the data contained herein was prepared by me or under my direct supervision.

Daniel L. Bueltel

License No. 43844

3/27/2021
Date

CERTIFICATE OF LOCATION OF GOVERNMENT CORNER

Land survey monuments situated in Section 22, Township 106, Range 40, 5TH P.M.

STATE OF MINNESOTA, County of Murray

E 1/4 22-106-40

STATEMENT OF EVIDENCE:

On April 10, 2020 Bueltel Moseng Land Surveying set a 5/8" iron w/seal #43844 midway and online between the NE and SE corners.

SE 22-106-40

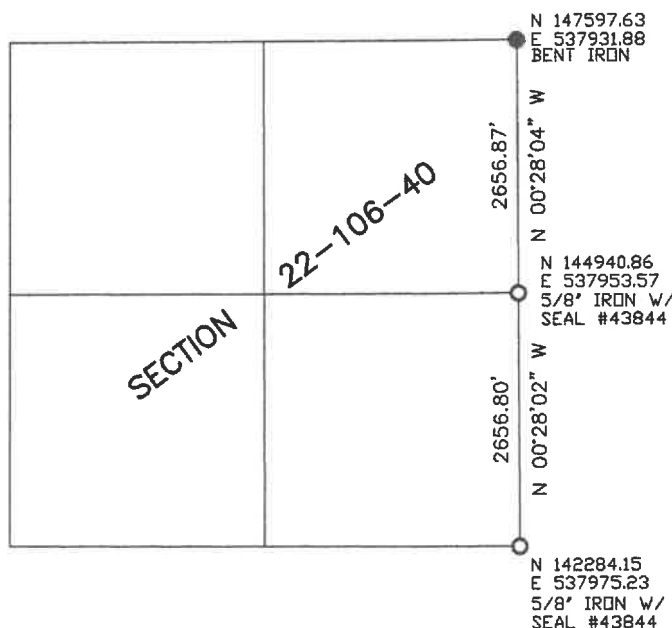
On August 26, 1902 J.W. Woolstencroft set a 12"x14"x16" stone.

On April 10, 2020 Bueltel Moseng Land Surveying found 5/8" iron w/ Tim Bell cap. Dug with backhoe and found nothing, replaced pin with 5/8" iron w/seal #43844



● FOUND MONUMENT

○ SET MONUMENT



Minnesota State Plane Coordinate
System Murray County Datum NAD83 (1996)